



MAY 2023

4-H Family News

Washtenaw County



Reminder: 4-H Online Enrollment Deadline is May 15th to participate in the Washtenaw County 4-H Youth Show

To participate in the Washtenaw County 4-H Youth Show, youth must be enrolled in [4-H Online](#) by May 15th. We will be sending out club rosters to all our current 4-H clubs leaders this week to help you check to make sure all youth in your club are enrolled. If any are not, please remind them to enroll as soon as possible.

Washtenaw County 4-H Youth Show Registration in FairEntry will begin on June 1st and we be posted on our website, Facebook, and sent out through 4-H Online. This is when youth will register for their projects.

UPCOMING MEETINGS AND EVENTS:

Washtenaw Farm Council Grounds Clean Up

May 11th from 5:30 – 6:30 pm with pizza provided at the Washtenaw Farm Council Grounds, 5055 Ann Arbor-Saline Rd, Ann Arbor, MI 48103

Advisory Council Meeting

May 11th at 7 pm at the Washtenaw Farm Council Grounds, 5055 Ann Arbor-Saline Rd, Ann Arbor, MI 48103

Junior Livestock Bake Sale

May 13th from 9:30 am – 3:30 pm at Tractor Supply Co, Tractor Supply Co. at 7251 Jackson Rd, Ann Arbor, MI 48103

4-H Online Enrollment Deadline for Washtenaw County 4-H Youth Show

May 15th

Horse Board & Association Meeting

May 23rd at 6:30 and 7:00 pm at the MSU Extension Office

Small Animal Committee Meeting

May 23rd at 6:00 pm at the MSU Extension Office

Washtenaw County 4-H Youth Show Registration Begins

June 1st

CONTACT US

Jenny Speyer
4-H Program Instructor
speyerje@msu.edu

705 N. Zeeb Rd., P.O. Box
8645
Ann Arbor, Michigan
48107

PHONE & EMAIL:

734-997-1678

msue.washtenaw@county.msu.edu

WEBSITE:

<https://www.canr.msu.edu/washtenaw/>

MSU is an affirmative-action, equal-opportunity employer, committed to achieving excellence through a diverse workforce and inclusive culture that encourages all people to reach their full potential. Michigan State University Extension programs and materials are open to all without regard to race, color, national origin, gender, gender identity, religion, age, height, weight, disability, political beliefs, sexual orientation, marital status, family status or veteran status. Issued in furtherance of MSU Extension work, acts of May 8 and June 30, 1914, in cooperation with the U.S. Department of Agriculture. Quentin Tyler, Director, MSU Extension, East Lansing, MI 48824. This information is for educational purposes only. Reference to commercial products or trade names does not imply endorsement by MSU Extension or bias against those not mentioned.



COUNTY 4-H NEWS

Help Clean up our Washtenaw Farm Council Grounds: May 11th 5: 30-6:30 pm



The Washtenaw County 4-H Youth Show will be here before we know it and we want to clean up the Washtenaw Farm Council Grounds for this event. We are fortunate to have the use of these grounds for free at all our 4-H programs and now it's our turn to help clean it up. Clean up will take place on May 11th from 5:30 -6:30 pm (at 5055 Ann Arbor-Saline Rd, Ann Arbor, MI, 48103) and pizza and drinks will be provided after the clean up. Stick around after to attend our 4-H Advisory Council Meeting will take place after the pizza on the grounds.

We recommend bringing gloves to keep hands clean and safe. Youth/Adults who clean up the most trash (we will have bags for you to check) will win some fun 4-H swag! Please let us know you plan so we can plan for pizza by registering here: <https://forms.gle/qyHya33iu1WbxbWJ9>

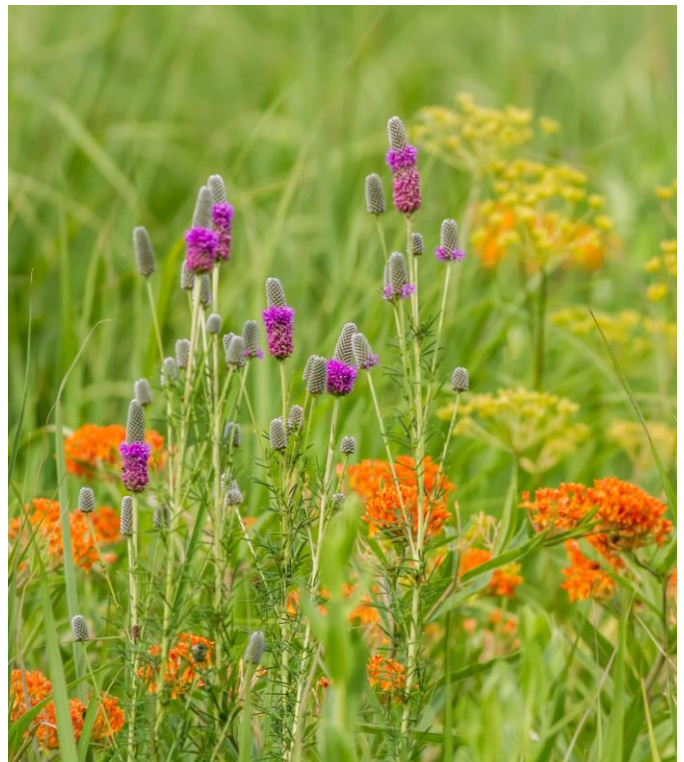
Pollinator Planting: June 3rd at 10 am at the Livingston Conservation District in Gregory

Ready for an Adventure? Join Livingston County 4-H, Michigan Pheasants Forever, and the Livingston Conservation District on June 3rd at 10 am for our Pollinator Planting day at the Livingston Conservation District in Gregory! We will be broadcast seeding and learning about pollinators at this amazing 190 acre Nature Center. The whole family is welcome to join at this FREE event. Lunch will be provided by the Livingston County Chapter of Pheasants Forever. **This event is open to youth from any county** and the location is not far from the Washtenaw County line. We will be returning to this site in August to see how the plants are progressing and see how it affects wildlife and insects in the area. Please help us spread the word about this fun, family friendly event!

Families can also bring fishing poles if you want to fish in their front pond!

For more information and to sign up:

<https://events.anr.msu.edu/4hconservationquest/>



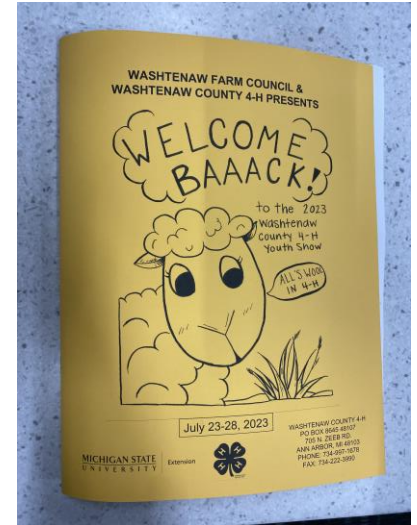


COUNTY 4-H NEWS

Washtenaw County 4-H Youth Show 2023 Books Available for Purchase or Download

The Washtenaw County 4-H Youth Show 2023 books are now available [digitally on our website](#) or you can purchase a paper copy from the MSU Extension Office for \$5 (cash or check). One 4-H Club leader per club and Superintendent can pick up their free copy from our office. Get ready to register in FairEntry next month by checking out all the fun ways to enter the Washtenaw County 4-H Youth Show.

Reminder: Our office hours are 8 am – 3 pm Monday, Wednesday, and Friday and from 9 am – 4 pm on Tuesdays and Thursdays. If you need to come outside those hours, contact us and we may be able to accommodate you.



Junior Livestock Bake Sale on May 13th from 9:30 am to 3:30 pm at Tractor Supply Co.



Looking for something sweet for Mother's Day? Washtenaw County 4-H Junior Livestock will be hosting a bake sale at Tractor Supply Co. at 7251 Jackson Rd, Ann Arbor, MI 48103 on Saturday May 13th from 9:30 am to 3:30 pm. All proceeds will be used to sponsor trophies for the 2023 Washtenaw County 4-H Youth Show. This is a great opportunity to support our local 4-H program and also get a delicious treat for mom or grandma!

Youth Can Still Sign Up for 4-H Archery Tuesdays from 6-8 pm at the Washtenaw Farm Council Grounds

The Washtenaw County 4-H Archery Club has begun meeting at the Washtenaw Farm Council Grounds on Tuesdays from 6-8 pm until the Washtenaw County 4-H Youth Show, except for July 4th. 4-H Archery is open to 4-H youth ages 8-19 years old, but limited to 25 youth, so sign up now. No equipment is necessary to participate, but you may bring your own if you wish. Recurve, long-bow, and compound bow under a 55 lb. draw weight are permitted. Additionally, a finger tab and arm guard is required,



but we have some available. A \$1 project fee is required for each session. Parents must remain on the ground during the meetings! Register at: <https://forms.gle/67wh87ncTgaCgsh17>



COUNTY 4-H NEWS

Washtenaw County 4-H Horse Association is Looking for Youth Delegates for the State Horse Show August 18-20

Washtenaw County 4-H youth who participate in horse projects are invited to register as a delegate for the State Horse Show on August 18-20th. The registration is first come first served. Youth have until June 30 to complete the form and Washtenaw County can send up to 21 delegates.

Register here: <https://forms.gle/LAuS8sfWBZW1S47d6>

Questions? Please contact Jackie Martin at marti623@msu.edu.



Congratulations to the Washtenaw County 4-H Horse Judging Team!



MSU held their annual 4-H/FFA Horse Judging event on Sunday, April 16th at the Pavilion. We would like to extend a huge CONGRATULATIONS to our Washtenaw 4-H Horse Judging team - Bella Nazzaro, Kate Bayliss, and Julia Lorch! It was a long and exhausting day judging 7 classes and giving oral reasons in front of event judges, but they made it through. A huge shout-out to Bella (Junior Novice) who, at 10 years old, even attempted this feat! Her division (ages 8-13) had so many participants and long lines, but she held up with poise and maturity well beyond her age. Kate placed 6th overall in the Junior Novice division. Julia placed 2nd in oral reasons and 1st overall in her Senior Novice division. Their coach, Angela Oakman, couldn't be prouder of these 3 intelligent and

observant ladies! And to think this was their first attempt at live horse judging! If anyone is interested in participating next year, please contact Angela Oakman at angela_oakman@yahoo.com.

There is Still Time to Support Washtenaw County 4-H with the Paper Clover Campaign!

Tractor Supply Company (TSC) customers across the nation will have the opportunity to support 4-H youth by purchasing a \$1 clover at checkouts when shopping both in stores or online from April 26-May 7. To learn more, visit www.canr.msu.edu/events/spring-tractor-supply-co-paper-clover-campaign.





COUNTY 4-H NEWS

Washtenaw County 4-H Youth Show YQCA Information

All market beef and swine exhibitors are required to have an updated YQCA certification before marketing animals at the 4-H Youth Show auction. This certification can be obtained by participating in an online or in-person training. Thanks to a grant from Bayer, this training is provided free of charge to Washtenaw 4-H exhibitors. Please follow the steps below to complete a certification.



1. Contact the MSU Extension Office at 734-997-1678 to obtain a coupon code (optional) to receive the training for free- you will need to specify if you need an online or in-person code.
2. Register through www.yqcaprogram.org – this step is required whether you attend in-person or online!
3. Sign up for your in-person training on the site and/or complete the online training.
4. Be sure to complete the pre-test before you attend an in-person training.

We are offering one opportunity for in-person training at the Washtenaw MSU Extension Office, **Monday May 22nd at 6:30 p.m.** Please register for this training by calling 734-997-1678. Need help registering? Check out this [YQCA Family Guide](#) to help walk you through the registration process.

Junior Livestock Youth Volunteer at Rural Safety Day



The Washtenaw County 4-H Junior Livestock youth were at it again this month helping as volunteers at Rural Safety Day at the Washtenaw Farm Council Grounds on April 15th. These youth talked to visitors about the importance of staying safe around animals and demonstrated these important tips with various livestock and pets. They also created many colorful, informative posters for youth and adults to view at the event. Great job educating our community about the importance of staying safe around domestic and wild animals!

Thank you to our Project RED Volunteers!

Once again, Project RED (Rural Education Days) was a success because of the many volunteers that make this event possible. We appreciate all the hard work of our many 4-H club members, volunteers, and parents who participated. We reached almost 1,500 3rd graders through this event and almost every school district in our county! Thank you and we look forward to working together on this again next year.





STATEWIDE CALENDAR OF EVENTS

Michigan 4-H Overnight Canine Camp



A camp for you and your pup! Join Michigan 4-H June 2-4 at Coldwater 4-H Camp in Weidman for the 4-H Overnight Canine Camp. Sessions will include showmanship, obedience, rally, agility, scent work, grooming and therapy dog. Additional activities will be leash making, dog skill-a-thon, dress up dog parade, demonstrations, crafts and s'mores.

Camp is open to youth ages 8-19. Campers ages 8-11 must be accompanied by an adult.

The cost for campers is \$100 for day campers or those who dry camp with their families or stay elsewhere. Overnight campers will pay \$120 and be housed in the dorms. Both campers will receive meals, snacks, materials and t-shirt.

Space is limited. Register by May 18. Learn more at www.canr.msu.edu/events/michigan-4-h-overnight-canine-camp.

May 1: Explore 4-H Club at Detroit Partnership for Food, Learning and Innovation (DPFLI) *DPFLI, Detroit*

Take part in an eight-week 4-H club to experience some of the many projects that 4-H has to offer! To enroll in this club, attend the 4-H Open House from 5:30-7:30 p.m. to sign-up, meet leaders, and enjoy games, giveaways, refreshments and more. Fun for the whole family!

www.canr.msu.edu/events/explore4hatdpfli

May 6: Hesse-Earl Youth Fishing Program

Lake Lansing, Haslett

Youth ages 5-16 will learn basic fishing skills such as casting, knot tying, rigging for different types of fishing, regulations, and fishing ethics. Additional sessions on May 13 at Hawk Island (Lansing) and May 20 at Motz Park (St. Johns).

www.canr.msu.edu/events/2023-hesse-earl-youth-fishing-program1

May 13: Michigan 4-H Day with the Detroit Tigers

Comerica Park, Detroit

Watch the Detroit Tigers take on the Seattle Mariners. Michigan 4-H will be honored as the group charity of the game and the 4-H community will enjoy discounted tickets to the game.

www.canr.msu.edu/events/michigan-4-h-day-with-the-detroit-tigers

May 18: Adulting 101 - Cracking the Code to College

Online

This workshop will address the college decision process. MSU Admissions will provide advice on getting admitted to the college of your choice and the application process, along with tips on writing your essay.

www.canr.msu.edu/events/adulting-101-5-18

June 3: 4-H Shooting Sports Instructor Training Workshop

Escanaba

Interested in leading shooting sports with a 4-H club? Become a certified instructor at this one-day, hybrid workshop! **Registration closes May 22.**

www.canr.msu.edu/events/4-h-shooting-sports-instructor-training-workshop-1

June 3: Michigan 4-H Livestock Judging Camp

Ionia County Fairgrounds, Ionia

This is a one-day clinic about all things livestock judging. Youth and their coaches will gain experience judging beef, sheep, swine, and meat goats, as well as practice with oral reasons, data assessment, and more! Space is limited; registration closes May 15.

www.canr.msu.edu/events/mi-4-h-livestock-judging-camp





STATEWIDE 4-H NEWS

Michigan 4-H Foundation opens 2023-24 grant cycle

Awarded annually, the Michigan 4-H Foundation recently opened their grant and award opportunities for the 2023-2024 season. Open to 4-H volunteer leaders, members and staff, the grants and awards support local 4-H clubs and county programs, as well as recognize members of the 4-H community. **All applications are due June 1.**

Opportunities include:

- **Michigan 4-H Legacy Grants of \$1,000.** These grants are awarded to support development of a new program or initiative or to strengthen, enhance or expand a current program that is making a difference.
- **4-H On-Target Grants of \$500.** These grants support 4-H Shooting Sports programs to enhance existing programs, develop a new program or offer a special experience related to 4-H Shooting Sports.
- **The Collins 4-H Youth Horticulture Grant of \$500.** This grant is available only to 4-H youth clubs and supports advancement of club work in plant science and horticulture activities.
- **4-H Educational Garden Grants of \$1,000.** These grants support the creation of local 4-H educational gardens in Michigan.
- **Michigan Farm Bureau 4-H Excellence in Agriculture Award (includes \$1,000 grant).** This award recognizes outstanding 4-H agricultural volunteers that have exhibited excellence in 4-H youth education and leadership development.



Learn more or apply online at <http://mi4hfdtn.org/grants>. Questions? Contact the Michigan 4-H Foundation at 517-353-6692.

Tips for purchasing and bringing home livestock

Adapted from: www.canr.msu.edu/resources/tips-for-purchasing-and-bringing-home-livestock

Acquiring new stock is exciting whether you are building your herd or flock or purchasing your annual 4-H project. These tips will help manage their health and safety by making sure you know what to ask before purchasing and how to prepare to bring livestock home.

Assessing Animal Health and Treatment Documentation

When purchasing animals, you should know their history. Ask the following questions:

- When was the animal born?
- What specific vaccinations has the animal been given and when were they given?
- If necessary, was the animal properly castrated and what method was used?
- Have any other treatments been administered to the animal? If so, what is the slaughter withdrawal for the drugs given?
- Have any of the animals on the farm been ill or shown symptoms of illness?
- If acquiring a market animal, what is the approximate weight?

Considerations as You Bring Animals Home

Transporting. Secure a trailer. If you do not own a trailer, make arrangements with someone who can transport animals for you. Be prepared to pay someone to provide transportation, as a courtesy.

Unloading. Make sure that your facility is ready to house your new animals before they arrive. Have a pen identified for new animals to go into with fresh water and appropriate feed. (Feed should be similar to their previous diet; changing to a new diet should be done over a period of time.) Have a clear and direct path to the animals' new pen from the trailer. Make sure that all gates are open or closed, as appropriate, and secured.

Settling in. Quarantine, or separate, new animals for a minimum of 21 days. At minimum, try to avoid nose-to-nose contact, and comingling feeding and watering. Minimize stress on new animals during the quarantine period. If after 21 days, the newly acquired animals have not shown any symptoms of illness, it should be safe to comingling them into your existing herd or flock.

Comingling. Since each species has a social hierarchy, observe animals during comingling and separate if there is risk of injury. Over the course of a day, the herd or flock should settle into a routine that includes the new animals.